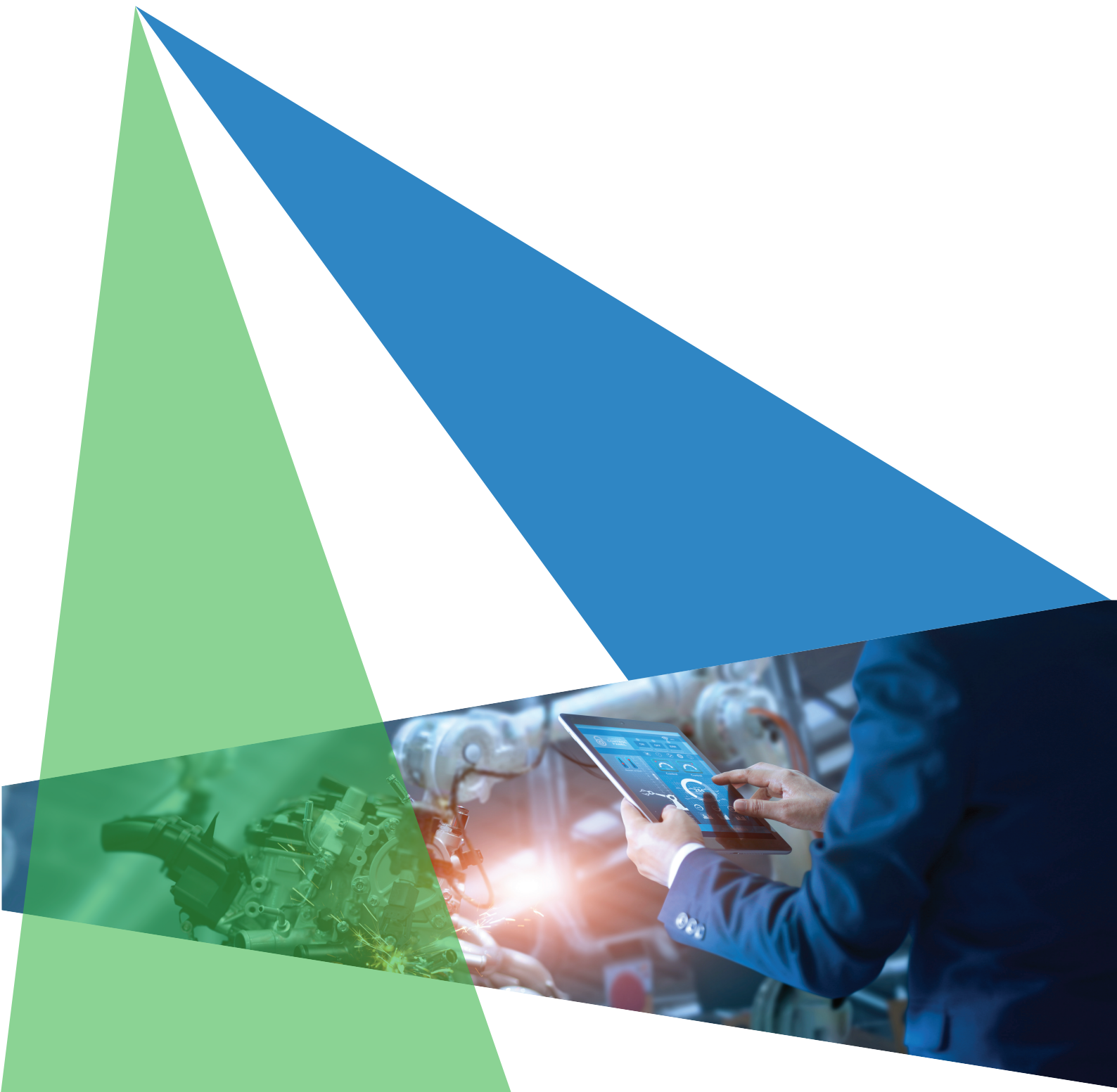




## **ANTELOPE WORKFLOW**

The business process management software for enterprise

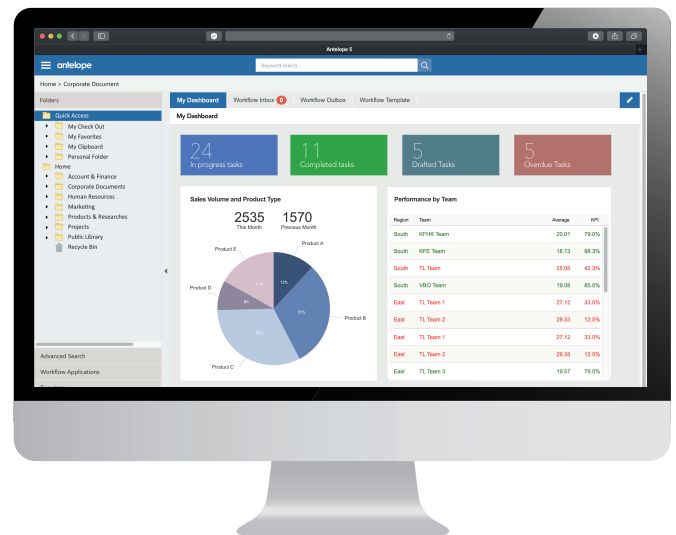


# ANTELOPE WORKFLOW & BUSINESS PROCESS MANAGEMENT

Antelope develops best-in-class software to work together as a single solution. Built on standard infrastructure, our technology is easy to install and use, scalable, and manageable.

Our Business Process Management (BPM) Solution focusing on business process automation that delivers accountability, control, and visibility. Our latest and most sophisticated technology This combines strategy, innovation, deployment, and development to streamline, automate, and transform operations.

Antelope Workflow is a harmony platform for designing, implementing and deploying process-driven applications together with genes of document and content management. It combines various of platforms to streamline, automate and transform your business operations.



■ We make humanware which meet the future needs of our customers.

## WORKFLOWS DEPLOYMENT

Our customers have deployed different workflows using Antelope platform:

Account Payable & Receivable  
Business Trip Application  
Capex Requisition and Disposal  
Credit Limit Approval  
Guest Visiting Registration  
Leave Application  
New Customer Registration  
Overtime Compensation  
Petty Cash Disbursement  
Purchase Request

Staff Onboarding & Exit  
Staff Recruiting  
Supplier Account Creation  
IT Service Request  
Site Incident Reporting

## PROCESS DESIGNER

Antelope Workflow provides business users a graphic design environment with the following features:

- Process Design Module with drag and drop components.
- Configuration with Permissions, Roles, Routing, Escalations, Delegations, Deadlines, Notifications and Integrations etc.
- Version Control with draft and publish controls.
- Guest access workflow with just a QR Code.

Antelope Workflow can easily be configured to optimize your business requirements. The process can report on key performance indicator as well as audit trails. Custom and ad hoc reports can be created via Advanced Report Generator or by developing through the API Toolkits.

## FORM DESIGNER

Antelope workflows adapt to individualized processes based on your team's specific tasks and needs without coding knowledge. Antelope provides workflow templates if you need ideas to begin your setup.

## ANALYTICS

Antelope Analytics and Reporting functions collect and analyze data to deliver actionable insights for your business. You can generate reports on various data sets like expenses, operations processes, staffing, and customer service. Users can use templates or customized reports to monitor KPIs using a variety of data sources, including financial, operations, and sales data.

## MONITORING

Antelope provides real-time monitoring of work in progress and archived work items. All participants can keep track on their project status and schedule. Antelope Workflow provides management visibility into process flows to monitor the progress. Also, the management can measure and analyse time taken, associated costs, and existing/potential bottlenecks. Missed deadlines or events trigger immediate reaction to changes and will not miss out on the task.

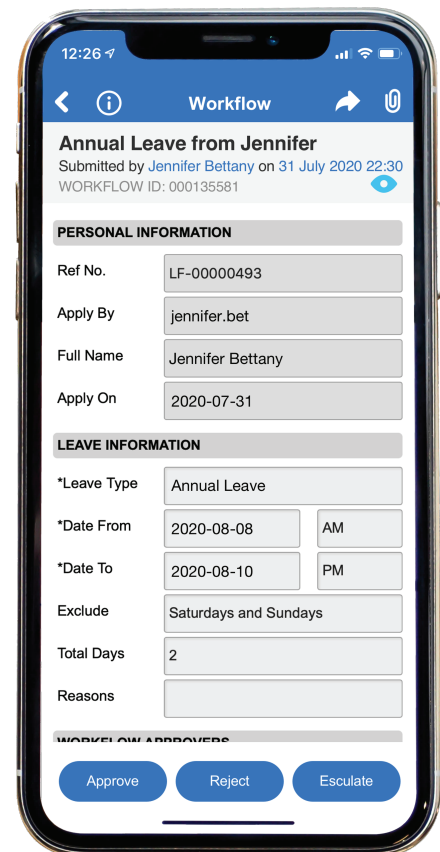
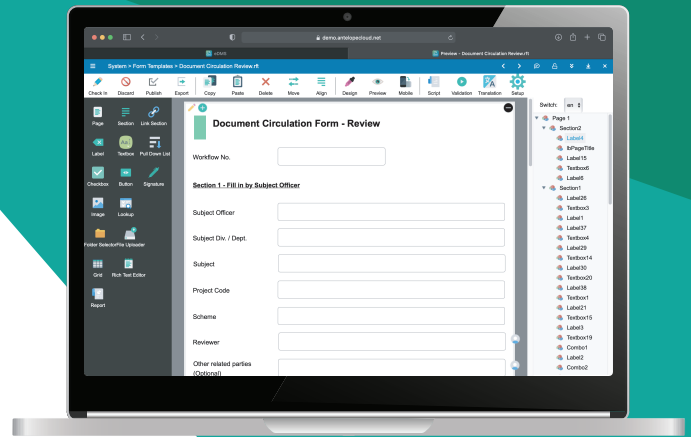
## INTEGRATION

Using Web services, adaptors, and other integration techniques allow Antelope Workflow-based applications to auto-populate electronic forms with data from existing sources. Integration also streamlines data validation, data updates, document versioning, and more

## MOBILE

Apart from your favourite browser, Antelope is also available for Android & iPhone that secure login with fingerprint or facial recognition. You can benefit from the mobile app by remotely connecting to your work, effectively handling deadlines and priorities, initiating, and submitting works with convenience, and actively monitoring processes. The mobile app also allows users to attach documents or photos to their work instantly.

Also integrated with messaging apps, more simplify process, approval and review the document with simply one-click the notification link in your push messages.





We have the best mission in the world - helping you stay ahead of the market while streamlining your work process.

We specialize in intelligent content management and business process automation. Our ground-breaking solutions include electronic forms, workflow, form capturing, email archiving, electronic data flow, electronic signature, and mobile solutions that create efficient workflows and shorten time to boost organizational productivity.

With over 20 years of enterprise business solution history, we live and breathe this fast-paced market. We have acquired the ability to quickly respond to its changing demands and provide trusted consultation on how to fully utilize the features and advanced functionality of your custom system, empower your productivity, and scale your business.

Enterprise workflow powered by Antelope – experience digital transformation in all its glory.

Learn more about Antelope at [antelope.com](https://www.antelope.com) and follow us on <https://www.facebook.com/antelopeasia>.